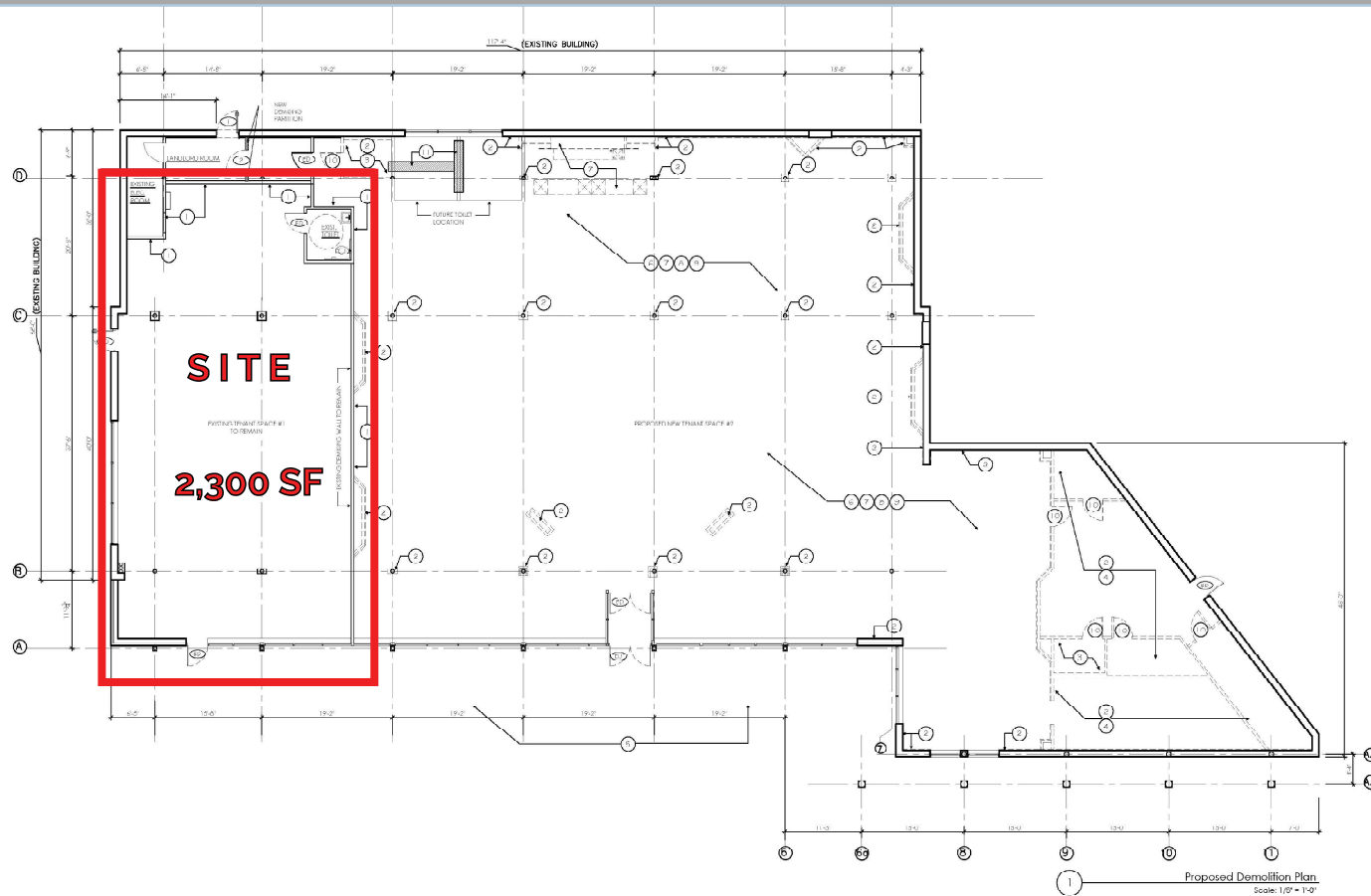


TOTOWA, NJ

275 Route 46
2,300 s.f. AVAILABLE



TOTOWA, NJ

275 Route 46
PRIME PAD END CAP LOCATION
2,300 SF AVAILABLE



Great visibility along the Rt. 46 retail corridor.
2 PYLON signs on Rt. 46.

AVAILABLE SPACE:

- 2,300 s.f., formerly occupied by T-Mobile.
- Access to and from Garden State Parkway, Route 3, Route 23 & Route 80.

Adjacent to Totowa Square with tenants such as Hobby Lobby, Marshalls, Home Sense, Applebee's, Aldi & Total Wine.

Demographics	3 miles	5 miles
Population	101,348	406,746
Households	34,973	141,322
Average HH Income	\$ 153,383	\$ 144,582
Median Age	40.7	38.7



WELCO REALTY, INC. 2525 Palmer Avenue, New Rochelle, NY 10801 . T (914) 576-7500 / Fax: 7596 . www.welcorealty.com



All information is from sources believed reliable and has not been independently verified. No representation is made to the accuracy of information herein, which is subject to errors, omissions and modifications. Licensed in New York, New Jersey, Connecticut & Pennsylvania.



275 US-46

Totowa, NJ 07512

September 2025

