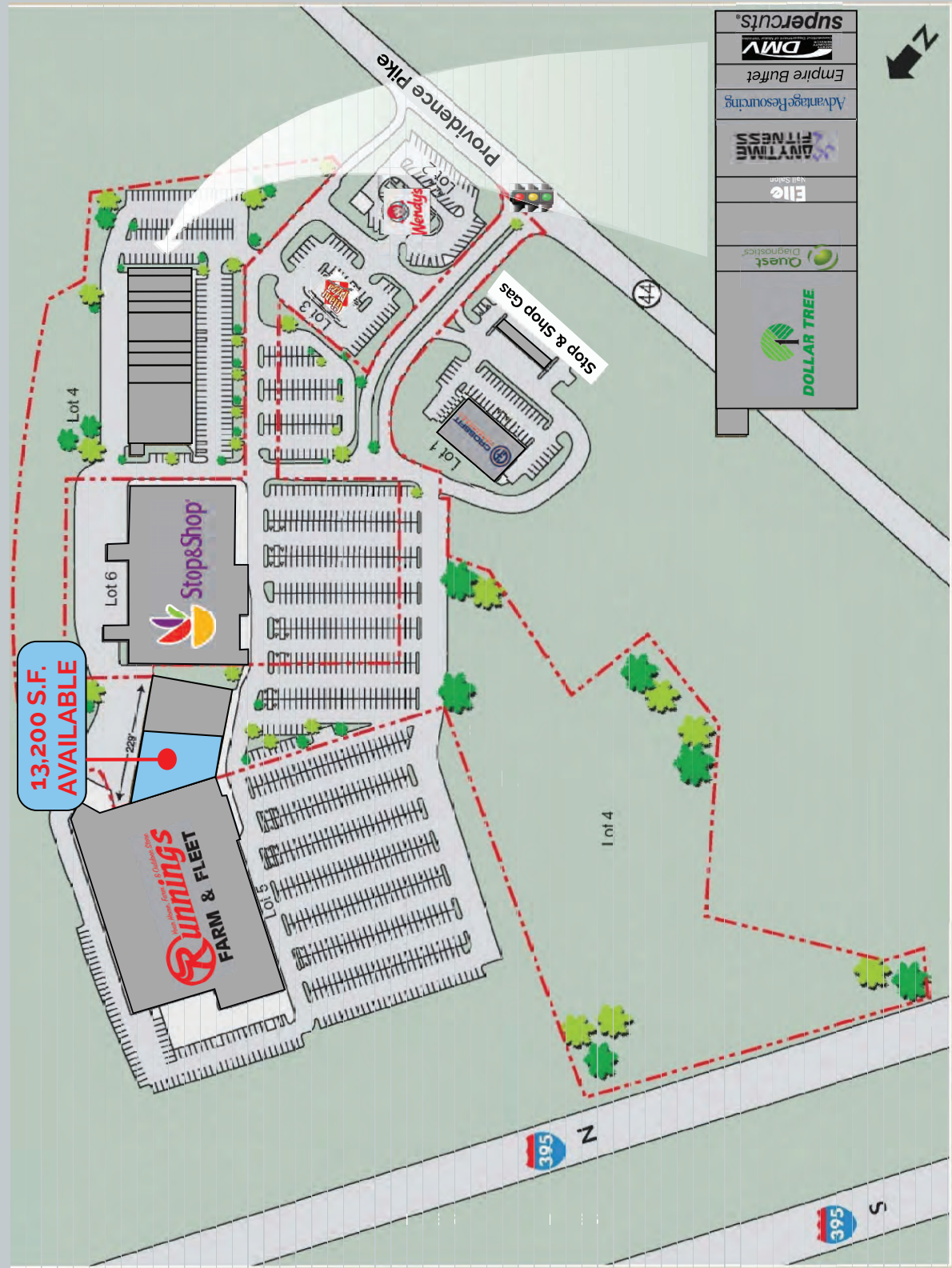


Putnam, Connecticut - 50 Providence Pike  
 Available - 13,200 s.f.



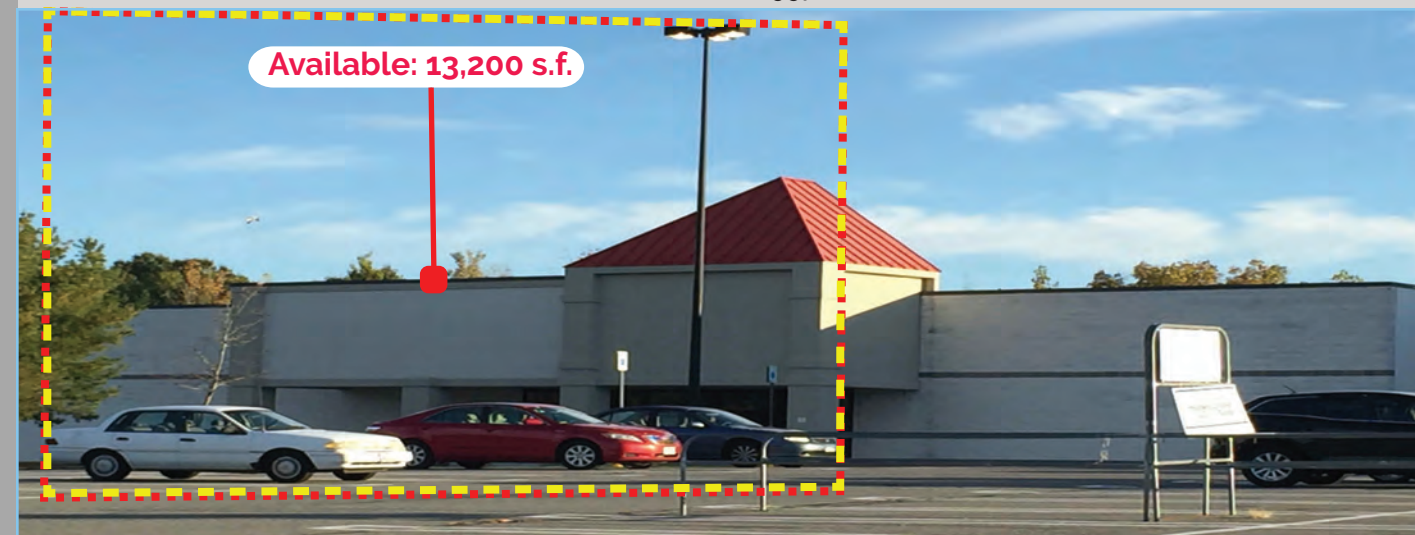
# PUTNAM, CONNECTICUT

## 50 Providence Pike

Available: 13,200 s.f.



Located next to southern New England's only Runnings location.  
 Less than a mile from I-395.  
 Adjacent to Stop & Shop.  
 C-4 - Highway Commercial District.  
 Frontage: 194 ft on Providence Pike  
 Loading Docks: 1 Exterior  
 Ceilings: 20 Ft.  
 Parking: 800 Spaces  
 Year Built: 1997



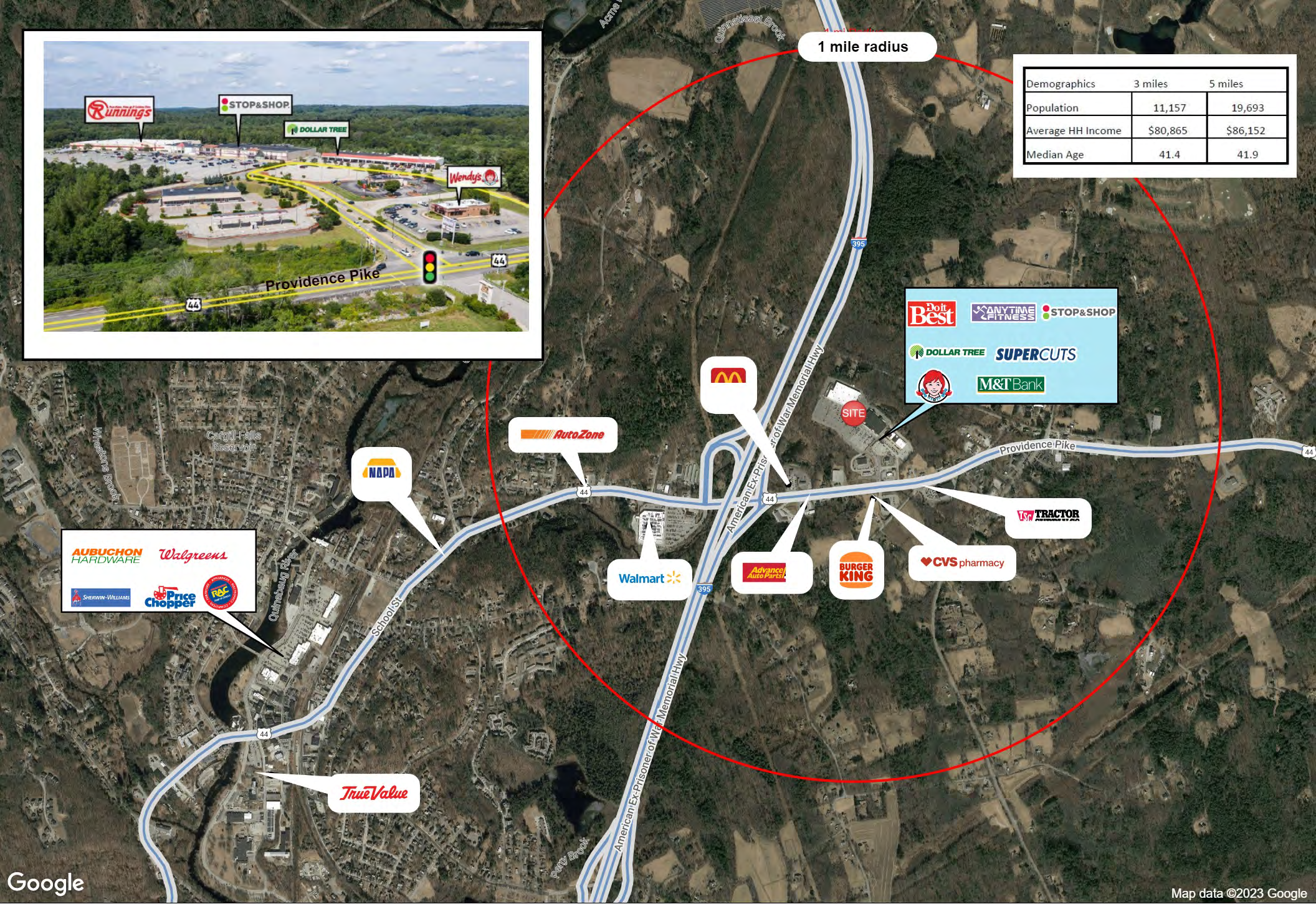
WELCO REALTY, INC. • 2525 Palmer Avenue, New Rochelle, NY 10801 • T (914) 576-7500 / Fax: 7596 • [www.welcorealty.com](http://www.welcorealty.com)

All information is from sources believed reliable and has not been independently verified. No representation is made to the accuracy of information herein, which is subject to errors, omissions and modifications. Licensed in New York, New Jersey, Connecticut & Pennsylvania.



1 mile radius

Demographics	3 miles	5 miles
Population	11,157	19,693
Average HH Income	\$80,865	\$86,152
Median Age	41.4	41.9



**AUBUCHON HARDWARE** *Walgreens*  
 SHERWIN-WILLIAMS **Price Chopper** **RFC**

**Do it Best** **ANYTIME FITNESS** **STOP&SHOP**  
**DOLLAR TREE** **SUPERCUTS**  
**M&T Bank**

Google

Map data ©2023 Google

# 50 Providence Pike, Putnam, Connecticut

