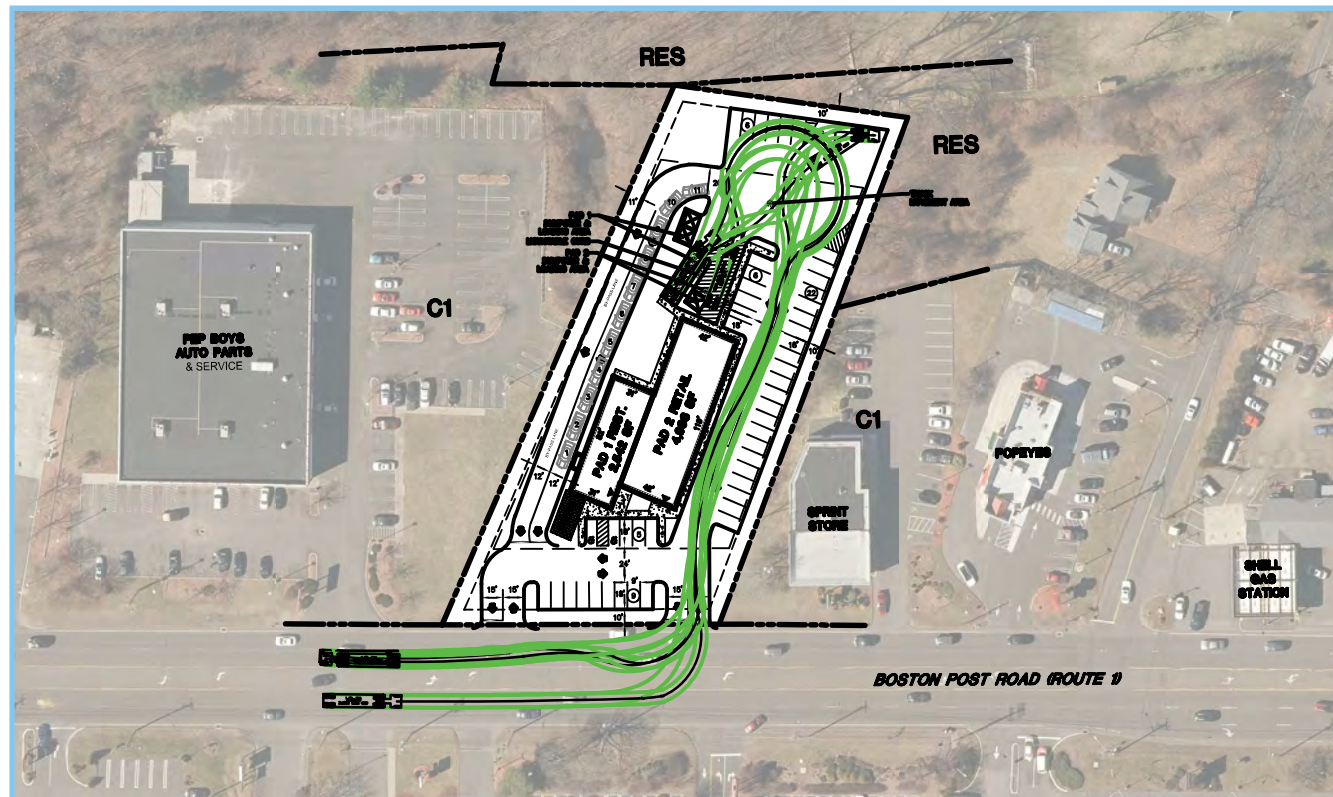


Orange, Connecticut - 5,000 sf Available
Former Bedding Barn



 Indicates Truck Path

ORANGE, CONNECTICUT

131 Boston Post Road
7,542 s.f. Available



AVAILABLE: 5,000 sf former Bedding Barn located on busy Rt. 1 corridor
- Also proposed restaurant pad of 2,542 s.f. with drive thru.

Parking: Up to 100 spaces

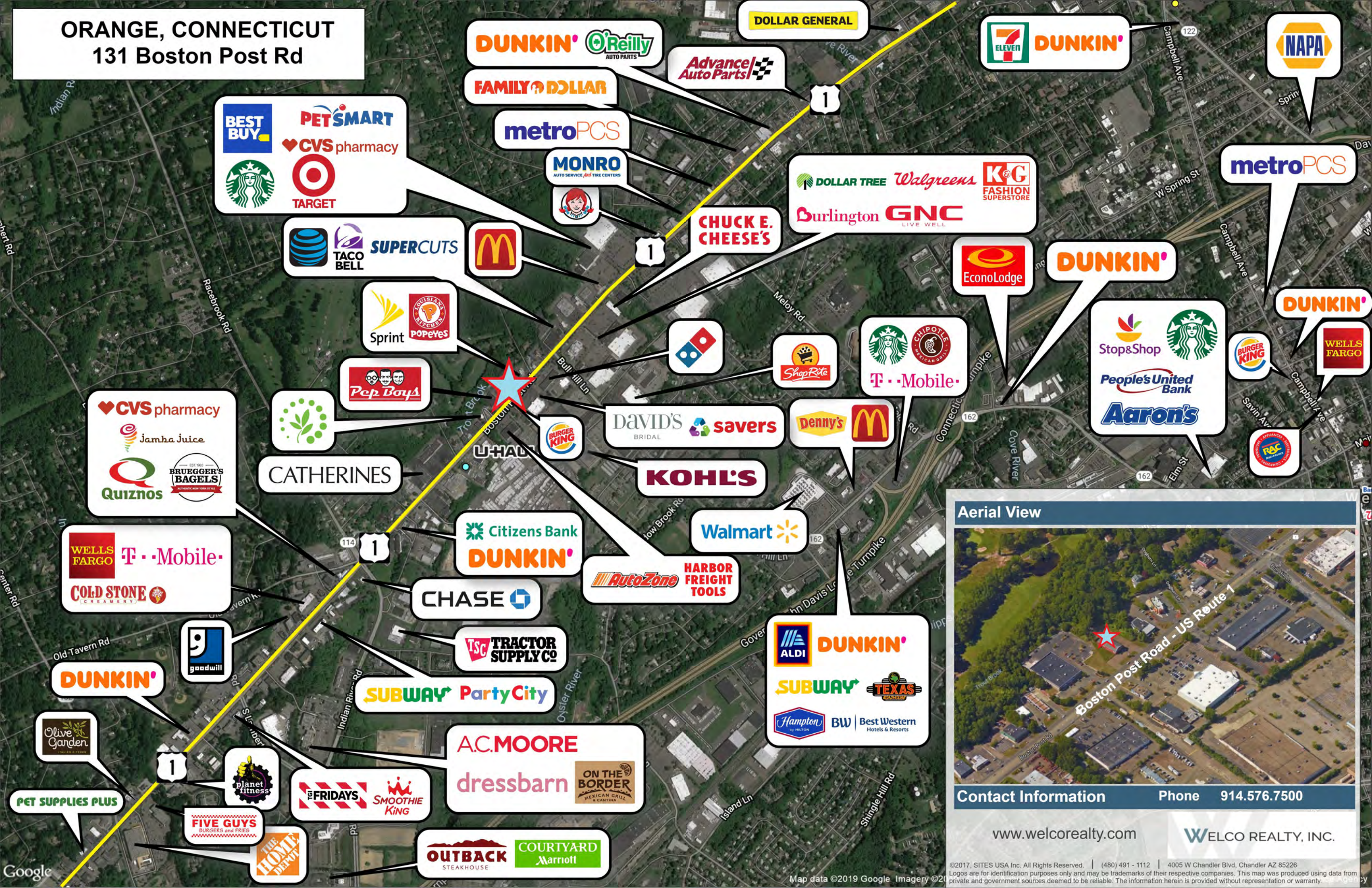
Neighboring

Retailers: Pep Boys, Popeye's, Chuck E. Cheese's, Dollar Tree, Walgreens, Supercuts, PetSmart, Family Dollar, Best Buy, Starbucks, David's Bridal, Savers, Kohl's, Supercuts, Harbor Freight Tools, Burlington, GNC, CVS, Target, ShopRite & Burger King

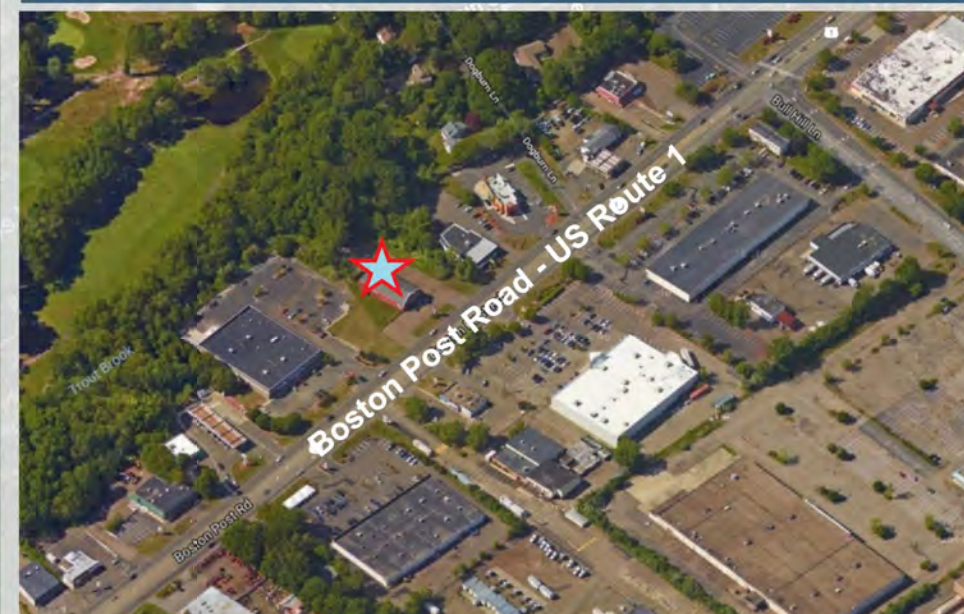
Demographics	1 mile	3 miles	5 miles
Population	6,516	70,544	188,073
Households	2,671	28,150	75,176
Average HH Income	\$ 65,405	\$ 84,156	\$ 83,743
Median Age	38.5	39.4	37.0



ORANGE, CONNECTICUT
131 Boston Post Rd



Aerial View



Contact Information Phone 914.576.7500

www.welcorealty.com WELCO REALTY, INC.

©2017, SITES USA Inc. All Rights Reserved. | (480) 491-1112 | 4005 W Chandler Blvd, Chandler AZ 85226
Logos are for identification purposes only and may be trademarks of their respective companies. This map was produced using data from private and government sources deemed to be reliable. The information herein is provided without representation or warranty.