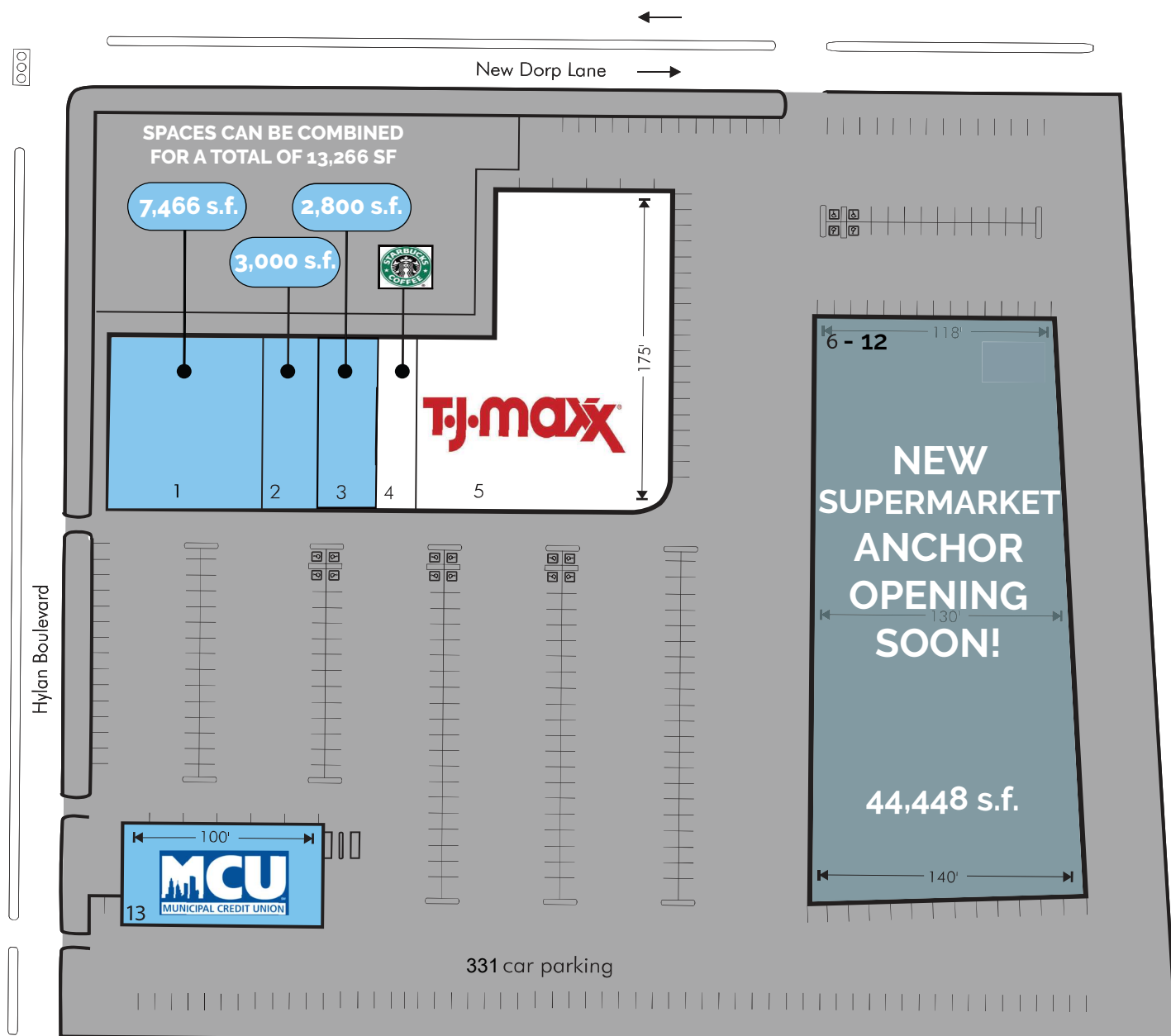


Staten Island, NY - Hylan Commons

SPACES CAN BE COMBINED FOR A TOTAL OF 13,266 SF



This site plan is for location purposes only. Dimensions are approximate. Not to scale.

NEW SUPERMARKET ANCHOR OPENING SOON!

Tenants	Area	Size
Up to 13,266 s.f. AVAIL.	1 AVAILABLE	7,466 sf
	2 AVAILABLE	3,000 sf
	3 AVAILABLE	2,800 sf
4 Starbucks		2,000 sf
5 TJ Maxx		21,000 sf
Second Floor		5,000 sf
	6	7,000 sf
	7	4,780 sf
	8	4,855 sf
	9	3,813 sf
	10	4,810 sf
	11	5,190 sf
	12	14,000 sf
	TOTAL	51,900 sf
	13 MCU - Potentially Available	5,000 sf

Staten Island, New York

Hylan Commons

NEW SUPERMARKET ANCHOR OPENING SOON!



NEW SUPERMARKET ANCHOR OPENING SOON!
SPACES CAN BE COMBINED FOR UP TO 13,266 S.F. AVAILABLE
Join TJ Maxx, Five Below, Municipal Credit Union Bank & Starbucks.

Location: Hylan Blvd & New Dorp Lane

Regional Access: -S.I. Expwy (278)
 -Route 440
 -Hylan Boulevard

Description: Regional Shopping Center

Parking: 331 spaces

Total Retail Sq. Ft.: 85,500 +/- sf

Population: 407,777 (5 miles)

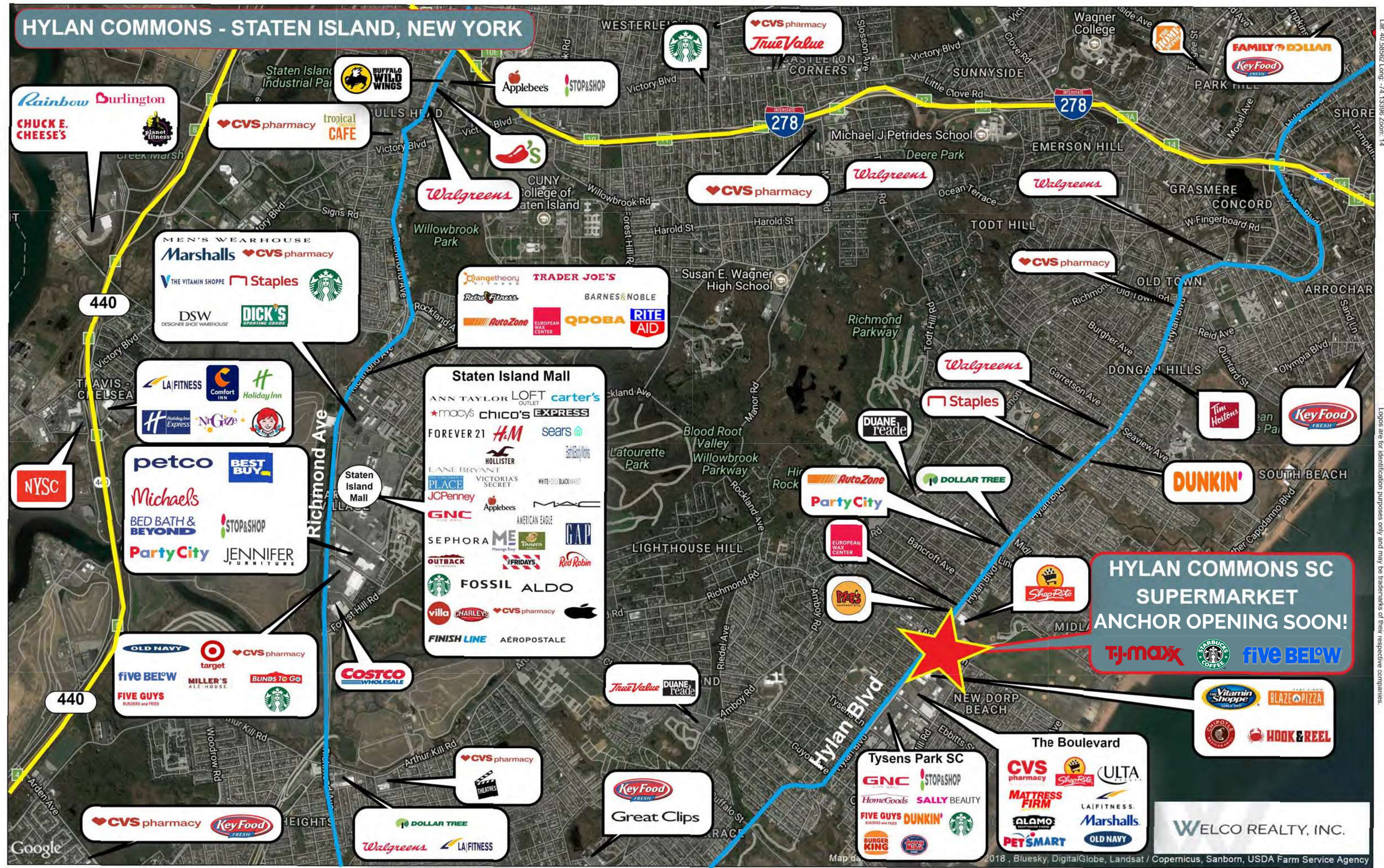
Households: 143,337 (5 miles)

Average HH Income: \$113,683 (5 miles)

Median Age: 39.7



HYLAN COMMONS - STATEN ISLAND, NEW YORK



HYLAN COMMONS SC SUPERMARKET ANCHOR OPENING SOON!

TJ-maxx **STARBUCKS COFFEE** **FIVE BELOW**

Staten Island Mall

ANN TAYLOR LOFT OUTLET carter's
 macy's chico's EXPRESS
 FOREVER 21 H&M sears
 HOLLISTER
 PLACE VICTORIA'S SECRET WHITE-COOL BACKWASH
 JCPenney Applebees MAC
 GNC AMERICAN EAGLE
 SEPHORA ME Truera GAP
 OUTBACK FRIDAYS Red Robin
 Starbucks FOSSIL ALDO
 villa CHARLEY'S CVS pharmacy
 FINISH LINE AÉROPOSTALE

petco **BEST BUY**

Michaels
 BED BATH & BEYOND STOP&SHOP
 PartyCity JENNIFER FURNITURE

OLD NAVY **target** **CVS pharmacy**

FIVE BELOW **MILLER'S ALL-HOUSE** **BLINDS To Go**

FIVE GUYS **Starbucks**

COSTCO WHOLESALE

CVS pharmacy **Key Food FRESH**

DOLLAR TREE **LA/FITNESS**

Key Food FRESH **Great Clips**

Tysens Park SC

GNC **STOP&SHOP**
 HomeGoods **SALLY BEAUTY**
FIVE GUYS **DUNKIN'** **Starbucks**
BURGER KING **Jimmy John's**

The Boulevard

CVS pharmacy **ShopRite** **ULTA**
MATTRESS FIRM **LA/FITNESS**
ALAMO **Marshalls**
PET SMART **OLD NAVY**

WELCO REALTY, INC.

This map was produced using data from private and government sources deemed to be reliable. The information herein is provided without representation or warranty

©2018, SITES USA Inc., Chandler, AZ (480) 491-1112. All Rights Reserved.

Lat: 40.56562 Long: -74.13398 Zoom: 14
 Logos are for identification purposes only and may be trademarks of their respective companies.