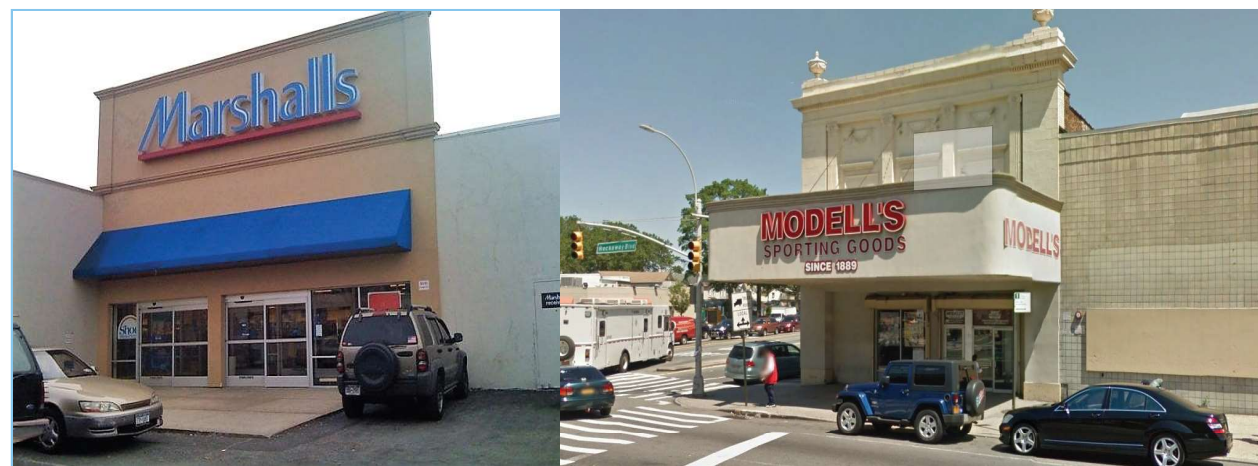


Ozone Park, New York (Queens)  
93-10 Rockaway Boulevard



Demographics	1 mile	2 miles	3 miles
Population	101,837	348,955	661,274
Average HH Income	\$ 79,003	\$ 73,215	\$ 73,842
Median Age	35.8	35.4	35.9
Rent:	Negotiable		



Neighboring tenants include PC Richard & Son, Modell's, Marshalls, Dunkin Donuts, Baskin Robbins, Walgreens, Papa John's, CVS, IHOP, Aarons, T Mobile, TD Bank, MadRag & White Castle.

Ozone Park, NY (Queens)  
93-10 Rockaway Boulevard  
Prime Corner - 13,365 s.f. Available



Mandee: 13,365 s.f. available with onsite parking at a signalized intersection.

There is also ample street metered parking. Easy access to public transportation.



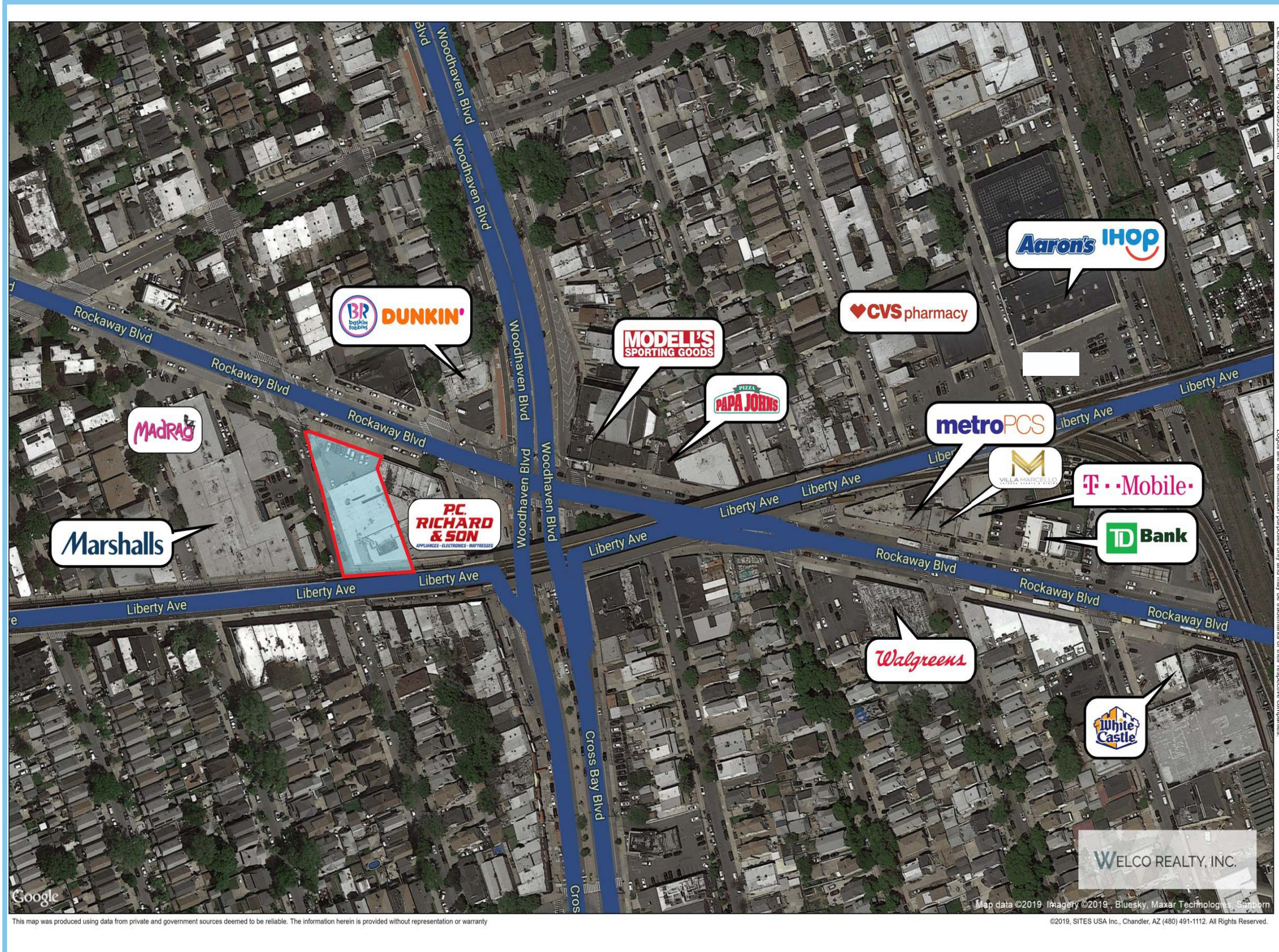
WELCO REALTY, INC. . 2525 Palmer Avenue, New Rochelle, NY 10801 . T (914) 576-7500 / Fax: 7596 . [www.welcorealty.com](http://www.welcorealty.com)



All information is from sources believed reliable and has not been independently verified. No representation is made to the accuracy of information herein, which is subject to errors, omissions and modifications.

# Ozone Park, New York (Queens)

## 93-10 Rockaway Boulevard - Prime Corner - 13,365 s.f. Available



### Space Available:

Mandee - 13,365 s.f. available with onsite parking

There is also ample street metered parking. Easy access to public transportation.

