

Westfield, New Jersey - Properties adjacent to Municipal parking



Demographics	1 mile	2 miles	3 miles
Population	16,651	55,505	105,583
Households	5,870	20,000	39,028
Average HH Income (2016)	\$193,125	\$175,181	\$159,970
Average HH Income (Proj. 2021)	\$233,744	\$213,154	\$194,811
Median Age	38.9	41.1	41.4



WESTFIELD, NEW JERSEY



Two Prime Retail Locations

Great for upscale retail specialty stores & restaurants!

1 121-125 Elm Street



**4,500 s.f. next to new Addams Tavern (Coming Soon!).
Wooden floors, full dry basement.
Adjacent to large Municipal parking.**

2 151 East Broad Street



**8,000 s.f. turn-key.
Former City Sports.
6,000 s.f. 2nd floor with high ceilings.**

JOIN THESE FINE RETAILERS IN NEW JERSEY'S HOTTEST DOWNTOWN

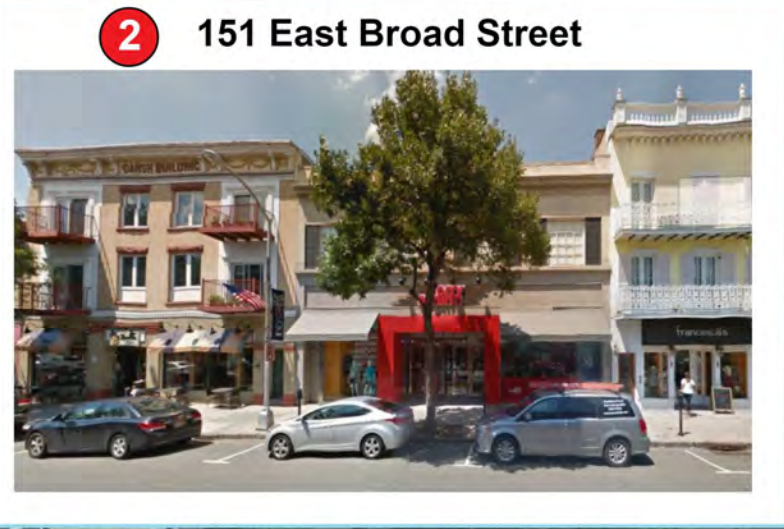
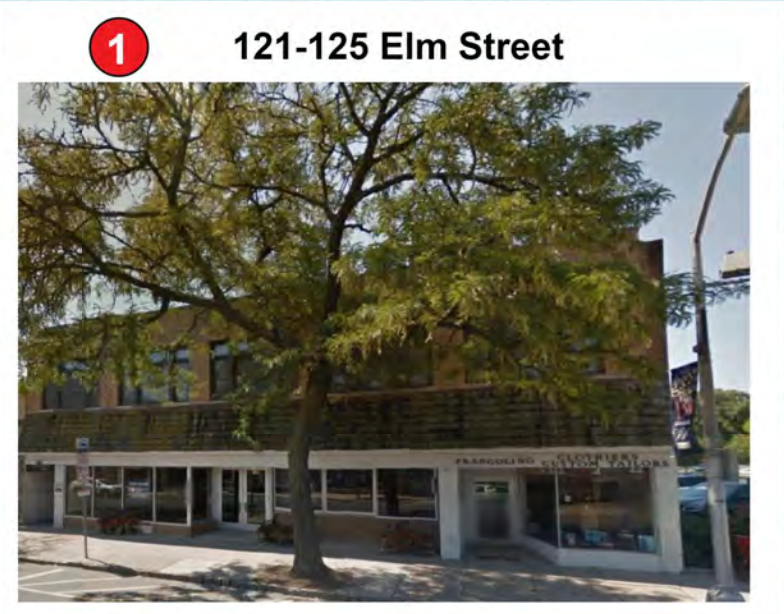


WELCO REALTY, INC. • 2525 Palmer Avenue, New Rochelle, NY 10801 • T (914) 576-7500 / Fax: 7596 • www.welcorealty.com

All information is from sources believed reliable and has not been independently verified. No representation is made to the accuracy of information herein, which is subject to errors, omissions and modifications.

Westfield, New Jersey

- 1** 125 Elm St 4,500 s.f. with basement & parking
- 2** 151 E Broad St 8,000 s.f. turn-key - Former City Sports
6,000 s.f. 2nd floor w/ high ceilings



WELCO REALTY, INC.