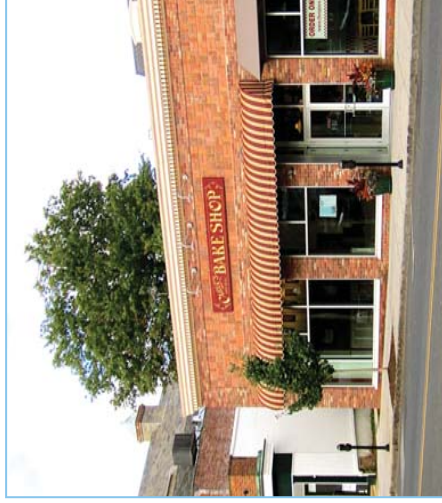


Westfield, New Jersey – Municipal parking around the corner on Elm Street



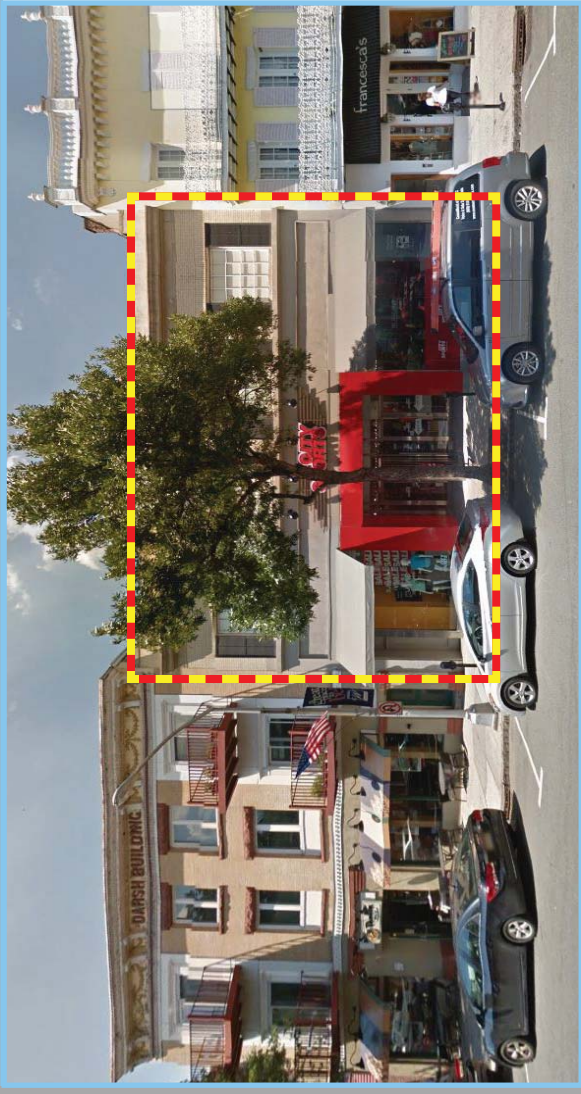
Demographics	1 mile	2 miles	3 miles
Population	16,581	55,472	108,888
Households	5,805	19,838	39,974
Average HH Income (2017)	\$202,312	\$177,039	\$160,452
Average HH Income (Proj. 2022)	\$251,926	\$220,864	\$201,591
Median Age	38.2	39.9	40.0



WESTFIELD, NEW JERSEY

Prime Retail Location

151 East Broad Street



Great for
upscale retail
specialty store
or restaurant!

- 8,000 s.f. turn-key ▪ Former City Sports ▪ 6,000 s.f. 2nd floor with high ceilings.

JOIN THESE FINE RETAILERS IN NEW JERSEY'S HOTTEST DOWNTOWN



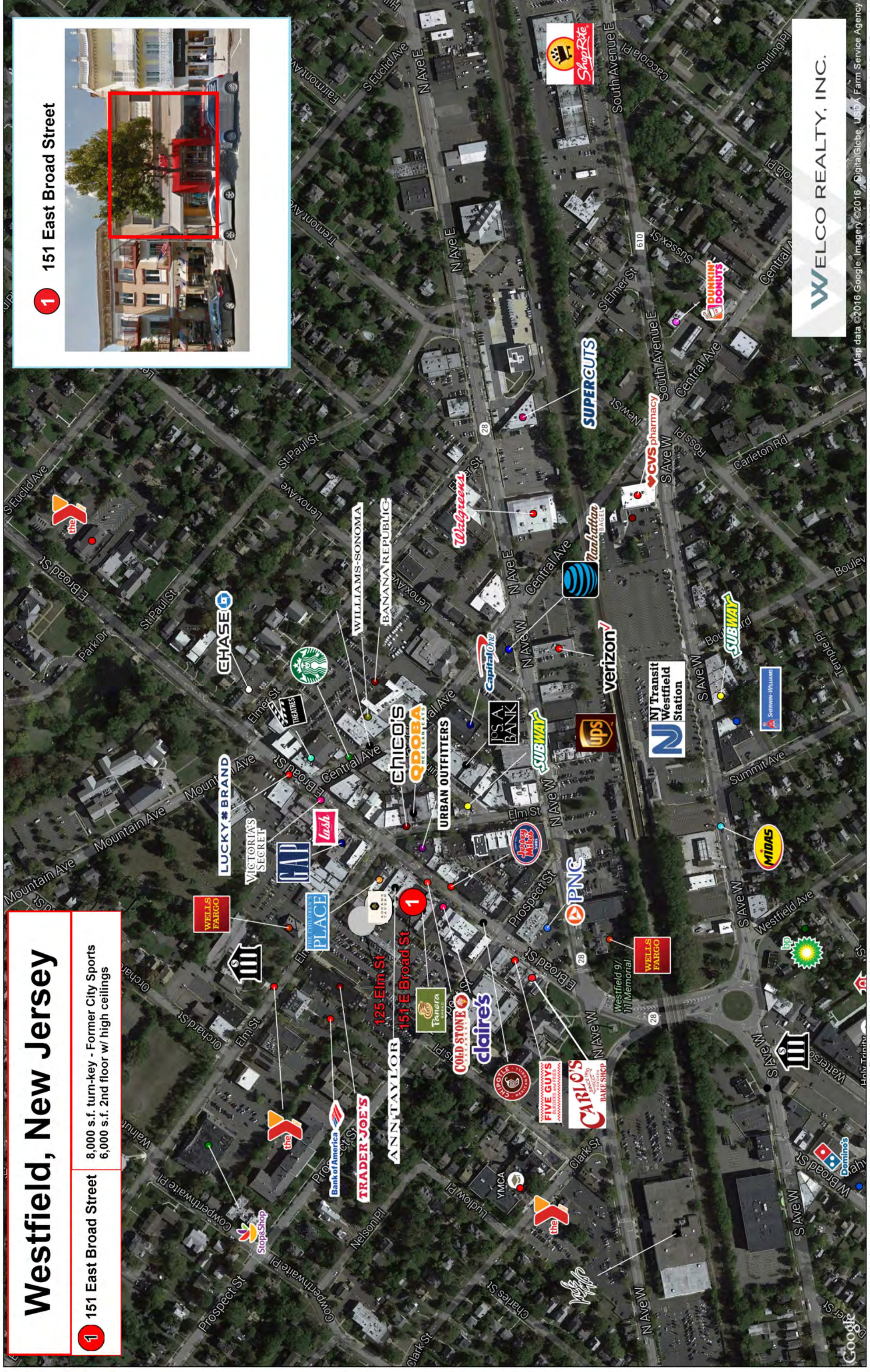
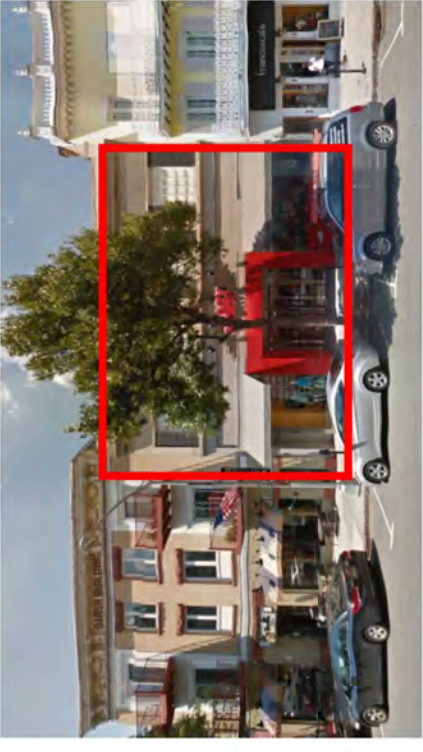
WELCO REALTY, INC. • 2525 Palmer Avenue, New Rochelle, NY 10801 • T (914) 576-7500 / Fax: 7596 • www.welcrealty.com

All information is from sources believed reliable and has not been independently verified. No representation is made to the accuracy of information herein, which is subject to errors, omissions and modifications.

Westfield, New Jersey

1 151 East Broad Street
8,000 s.f. turn-key - Former City City Sports
6,000 s.f. 2nd floor w/ high ceilings

1 151 East Broad Street



WELCO REALTY, INC.