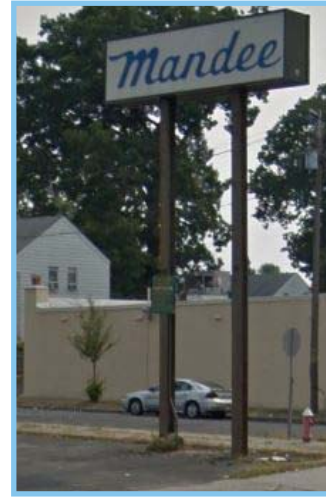


# Linden, New Jersey 415 W. St. Georges Avenue

Join Auto Zone, Pizza Hut, Payless Shoe Source  
Papa John's Pizza & Santander Bank.

Demographics	3 miles	5 miles
Population	170,491	457,610
Households	63,242	161,234
Average HH Income	\$ 82,653	\$ 88,499
Median Age	38.8	37.7



# Linden, New Jersey 415 West St. Georges Avenue

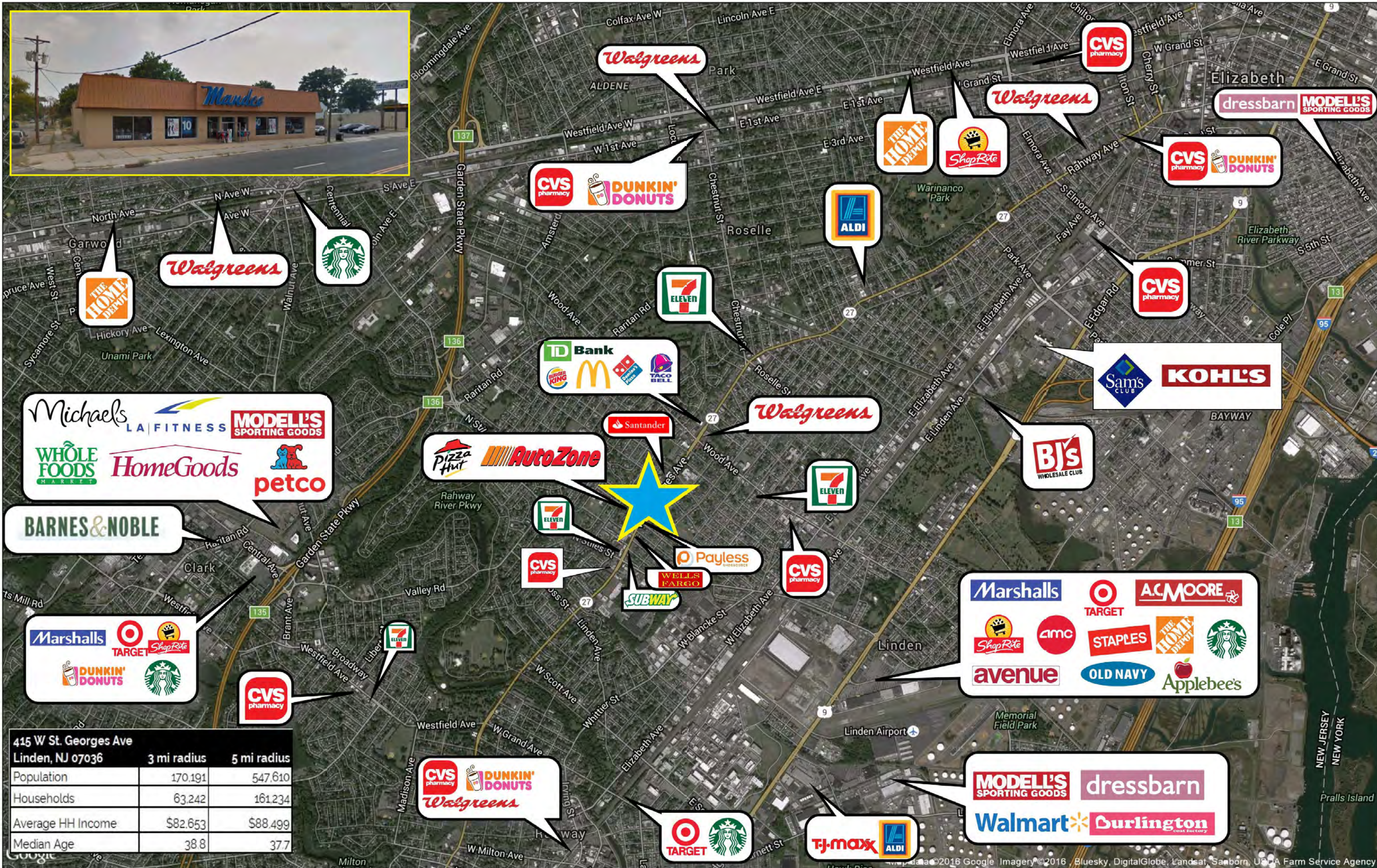


- Available: Prime corner location - 7,800 s.f.
- Parking: Great on-site parking & excellent signage on pylon!
- Join neighboring retailers: Pizza Hut, Auto Zone, Santander Bank, Papa John's Pizza & Payless Shoe Source.
- Traffic Count: 32,000 cars AADT - W. St. Georges Avenue



WELCO REALTY, INC. • 2525 Palmer Avenue, New Rochelle, NY 10801 • T (914) 576-7500 / Fax: 7596 • [www.welcorealty.com](http://www.welcorealty.com)

All information is from sources believed reliable and has not been independently verified. No representation is made to the accuracy of information herein, which is subject to errors, omissions and modifications.



415 W St. Georges Ave Linden, NJ 07036	3 mi radius	5 mi radius
Population	170,191	547,610
Households	63,242	161,234
Average HH Income	\$82,653	\$88,499
Median Age	38.8	37.7

This map was produced using data from private and government sources deemed to be reliable. The information herein is provided without representation or warranty