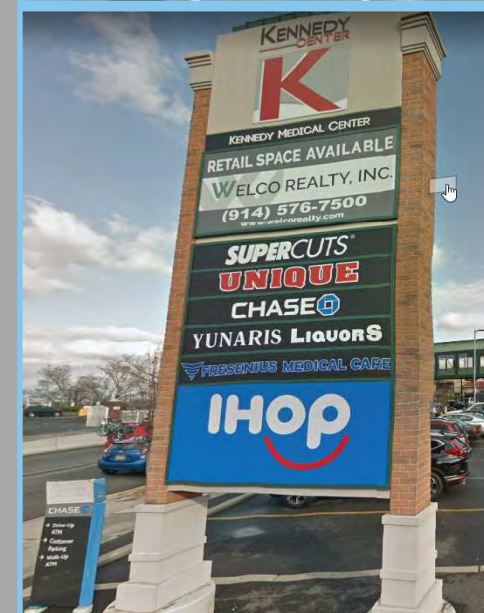
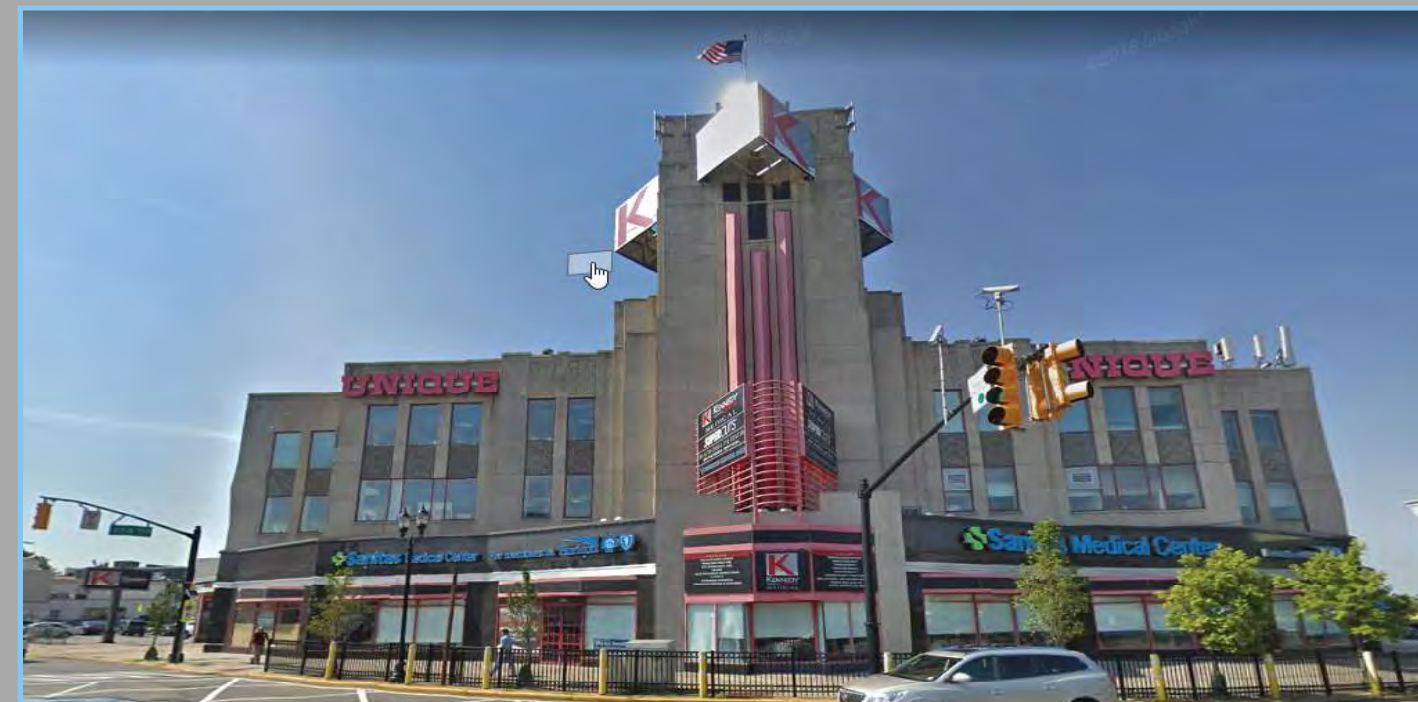


Union City, New Jersey  
Kennedy Center  
Kennedy Blvd. & 32nd Street

Union City, New Jersey  
Kennedy Center  
Kennedy Blvd & 32nd Street



Demographics	1 mile	3 miles	5 miles
		(Excluding NY)	
Population	85,118	343,716	575,274
Households	30,698	134,821	230,256
Average HH Income	\$ 68,738	\$ 91,666	\$ 94,261
Median Age	35.8	35.3	35.4



Available: 6,740 s.f.

Major Tenants: ShopRite, New York & Company, Modell's Sporting Goods, Children's Place, Lucille Roberts, Massage Envy, Beach Bum Tanning, Edible Arrangements, Supercuts & Starbucks

Parking: 370 parking spaces



# Union City, New Jersey Kennedy Center - Up to 6,740 sf



## TENANTS

**LOWER LEVEL**  
Apogee (Unique) 22,000 sf

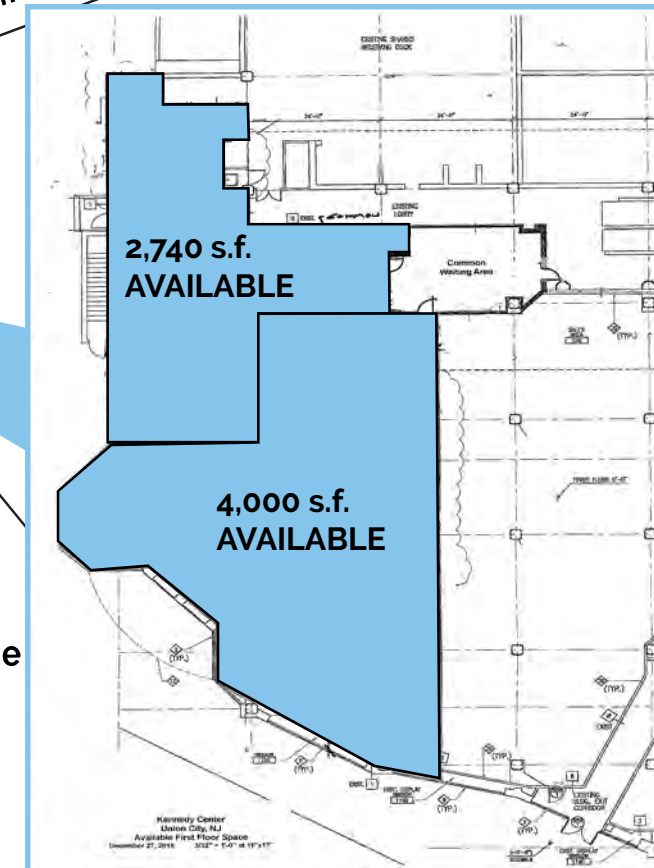
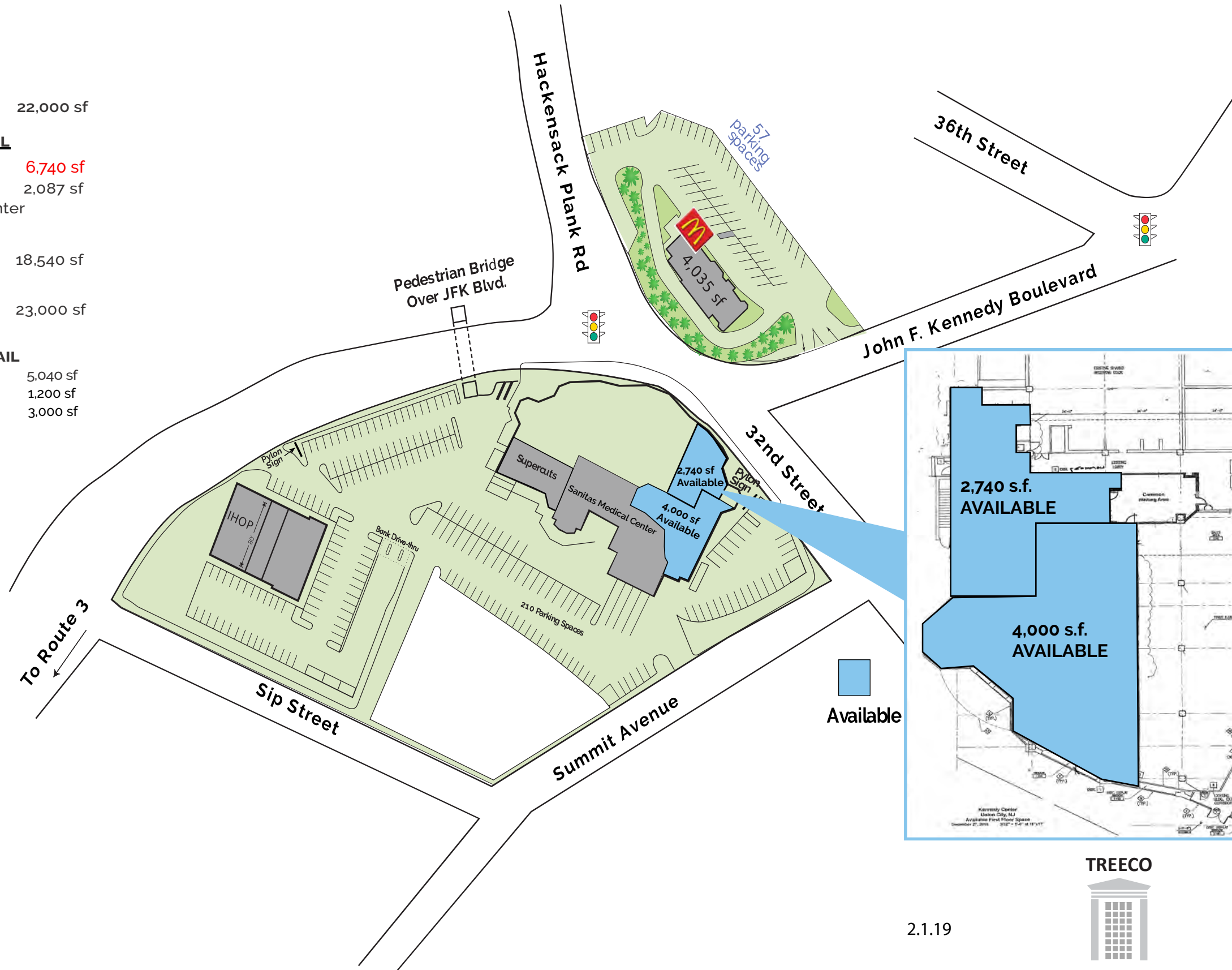
**FIRST FLOOR - RETAIL**  
**Available 6,740 sf**  
Supercuts 2,087 sf  
Sanitas Medical Center

**SECOND FLOOR**  
Medical Suites 18,540 sf

**THIRD FLOOR**  
Medical Suites 23,000 sf

**FREESTANDING RETAIL**  
IHOP 5,040 sf  
Liquor Store 1,200 sf  
Chase 3,000 sf

**OUTPARCEL**  
McDonald's



Union City is in one of the most densely populated city in the nation. Its location is at the triple intersection of Kennedy Boulevard, Hackensack Plank Road and 32nd Street adjoining Route 3 and less than a mile from the Lincoln gateway to Manhattan.

It is a 4 story art deco building, formerly occupied by Sears Department Store, with an on-site parking field in a downtown district.

Outstanding signage and visibility on 3 levels acts as a magnet for retailers who will attract customers from an unparelled 68,000 population within a mile of Kennedy Center.

**Location**  
Kennedy Boulevard & 32nd Street, Hudson County Union City, New Jersey

**Regional Access**  
Route 3 and I-495

**Description**  
Mixed-Use Building

**Parking**  
370 Spaces

**GLA**  
105,000 ± Square Feet

2.1.19

