

New Rochelle, New York

507 Main Street



**5,000 SF Prime Corner Retail Location
Plus Storage Basement**



Location: Prime corner location adjacent to municipal parking lot. Located at the intersection of Memorial Highway & Main Street (Rt. 1)

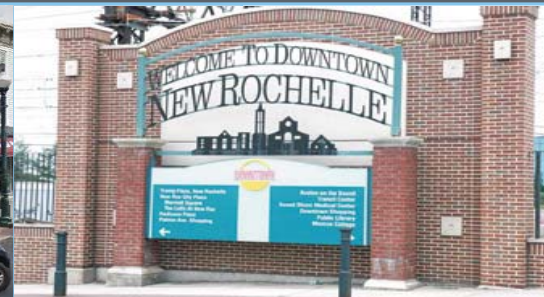
Join: Other major retailers such as Super Stop & Shop, Modell's Sporting Goods, Payless, Mad Rag, Applebee's, CVS, AT&T & Metro PCS

Store Size: 5,000 sf plus storage basement

Available: Upon 90 days notice



Demographics	1 mile	3 miles	5 miles
Population	40,423	82,926	158,452
Households	14,657	29,828	57,834
Average HH Income	\$ 68,219	\$105,796	\$109,232



WELCO REALTY, INC. • 2525 Palmer Avenue, New Rochelle, NY 10801 • T (914) 576-7500 / Fax: 7596 • www.welcorealty.com

All information is from sources believed reliable and has not been independently verified. No representation is made to the accuracy of information herein, which is subject to errors, omissions and modifications.

