

BAYONNE, NEW JERSEY

554 BROADWAY

9,400 SF AVAILABLE FOR LEASE OR SALE

SALE PRICE: \$1.8 MILLION



Location : 554 Broadway

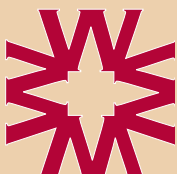
Available: 9,400 s.f.

Rent: \$16.00 per s.f.

Taxes: \$7.21 per s.f.

CAM: \$.75 per s.f.

Demographics	1 mile	3 miles	5 miles
Population	32,997	161,369	523,727
Households	13,435	59,690	182,221
Average HH Income	\$ 58,263	\$ 65,329	\$ 65,707
Median Age	38.9	36.0	34.6



WELCO REALTY, INC.

EXCLUSIVE LEASING AGENT

2525 PALMER AVENUE

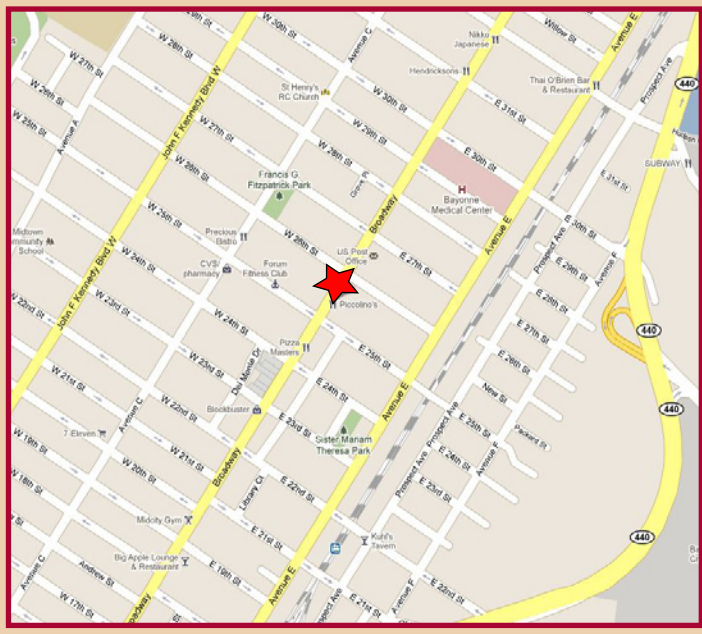
NEW ROCHELLE, NEW YORK 10801

914.576.7500 / FAX: 7596

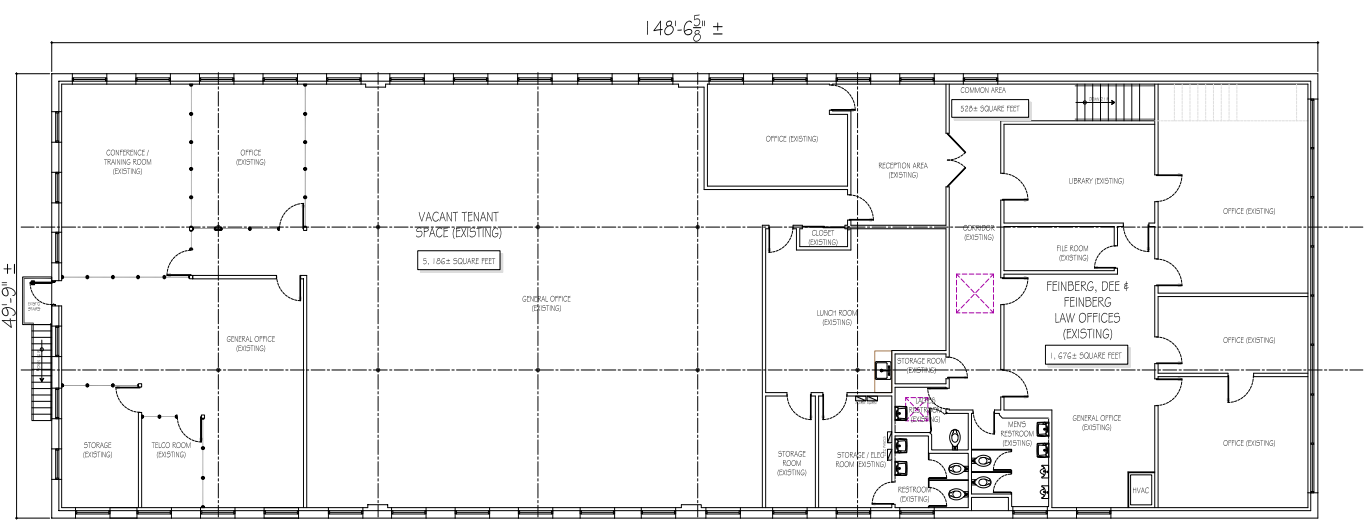
WWW.WELCOREALTY.COM



FIRST FLOOR PLAN



SECOND FLOOR PLAN



TOTAL BUILDING 7,390± SQUARE FEET

Second Floor Plan - Existing Conditions
SCALE: 1/8" = 1'-0"